

**ESSEX LIFE**  
**FOOD&DRINK**  
AWARDS 2018

Sponsored by  
*Essex Life*

**THE FOX & HOUNDS**

**FINALIST**

Pub of the Year

Sponsored by  
G-G Gallo

ARCHANT }

**01268 711625 / 07973 471032**

foxandhoundsramsden



# RAMSDEN BELLHOUSE

## Village Magazine Winter 2018



*Cats rule OK. Seen while out walking*



# THE OTTLEY GROUP

01268 711011

• HOUSING &  
COMMERCIAL  
CONTRACTORS



• EXCAVATOR &  
DUMPER HIRE  
• DEMOLITION

ALL GROUNDWORKS UNDERTAKEN  
SITE CLEARANCE

FOUNDATIONS, DRAINAGE & EXTERNAL WORKS

Emails: [chrisottley@theottleygroup.co.uk](mailto:chrisottley@theottleygroup.co.uk) [paularnold@theottleygroup.co.uk](mailto:paularnold@theottleygroup.co.uk)

63A DOWNHAM ROAD, RAMSDEN HEATH, CM11 1PZ

*Hennings Stores Ltd*



Church Road Ramsden Bellhouse

01268 710921

A unique family run store catering for all your  
Convenience needs. Always at your service.

- ✓ Post Office
- ✓ Newspaper Deliveries
- ✓ Cash Machine
- ✓ Groceries/Deli
- ✓ Off Licence
- ✓ Foreign Currency (pre-ordered)
- ✓ Travel Insurance
- ✓ Fresh Bread
- ✓ Photocopying
- ✓ Lottery
- ✓ Dry Cleaning
- ✓ Credit Cards

## A Word from the Editor

I write this on a beautiful Autumn day but we have had an extraordinary heat wave in the summer and nature seems to have become a little confused. Whilst wide deep cracks in the lawn still remain to twist the unwary ankle some plants are madly trying to make up for six weeks of suffering. My choisia is merrily flowering in spite of my telling it that it is now September and not April!

Grass is growing, but leaves are dropping and conifers are dying. However luckily these things sort themselves out naturally.

My outspoken comments in the last magazine, re rubbish etc in St Mary's Church yard received much congratulations. However I continue to pick up fast food remains, bottles, cigarette packets and other less savoury objects so it obviously fell on deaf ears of those responsible. Any suggestions?

With the coming of Christmas and the winter months, we have our Village Hall and Church Events to look forward to, together with our regular events. Once more I have to comment that they seem more attractive to our very welcome friends from neighbouring areas than residents of Ramsden Bellhouse. Why? We have just lost our Badminton Club through lack of support. What next?

Sadly I have to report that I am losing advertisers to support this magazine. Up until lately we always made a small profit, but now due to internet advertising etc, and businesses closing down, we are running at an unhealthy loss, which cannot continue. So please help us to continue to deliver our magazine FREE to every house in Ramsden Bellhouse, and to our neighbours who come to the two churches and the Village Hall. We cannot run at a loss forever!

On that somewhat depressing note, I wish you all a Happy Christmas and Prosperous New Year. May our Village Amenities be used and Churchyard be free of rubbish

Thanks to all those connected with the production, publication and delivery of this magazine, as well as the advertisers. Copy for the next issue by March 20th 2019. either to me or preferably to [bryan.diggory@sky.com](mailto:bryan.diggory@sky.com).

*Isabel Johnson*

## Advertising Rates

Coloured Half pages - limited	£33.00
Black & White (Mono) Half Pages	£23.00
Black & White (Mono) Quarter Pages	£14.00



## Chairmans Report

The sun is at last loosing it's power but the rains are still to come, my lawn has still not fully recovered from the long period of zero rain.

At the village hall we have at last renewed the Old Hall floor; the floor beams were found to be badly rotted and were replaced just in time. It is hoped that this repair should last for many years to come, it will certainly last beyond my life time, so it will be up to some future chairman to organise it's replacement. This repair was carried with the help of a grant of £10,000 from Awards for All Lottery Fund, the rest of the money from our own reserves.

The heating system has now been fully upgraded to a pressure system, tested and will be available for the coming year. The upgrade involved the fitting of a new smaller gas boiler and the pressure testing and modification all the old systems.

The History of Ramsden cupboards for the storage of documents have now been fitted in a dry location, ready for future events.

There are still some jobs left to do, mainly the Grounds and carpark want to be sorted.

Events during this summer all proved very successful, I wish to thank all those involve for your help in putting on these events.

*C Jeffree, Chairman RBVH*  
*chairman@ramsdensbellhouse.info*



## Parish Council

*Since last reporting on the status or lack of progress on the Local Plan RBPC Parish Council*  
**Local Plan**

Since last reporting the status of the Local Plan in relation to Ramsden Bellhouse, a considerable number of meetings and changes have taken place including of course the outcome of local elections.

There is unfortunately not sufficient space on the pages of this publication to give a complete picture and details of how the Local Plan is developing, however by visiting Basildon Council's w.site;

<http://www.basildonmeetings.info/ieListDocuments.aspx?CIId=818&MIId=6518> you will be able to view the Local Plan's Provision for Ramsden Bellhouse.

This will be subject to submission and approval by a Government Inspector following a further consultation, dates to be finalised and confirmed for later in 2019.

Given the press date of this magazine, any further updates to the information received as it relates to the Local Plan and the proposed Neighbourhood Plan will be communicated by posting on the RBPC Notice board and website and of course at Parish Council meetings.

For residents that do not have access to the internet, Basildon Council took the decision (following submissions by the PC and residents) at the Strategic Planning and Infrastructure Committee meeting held on the 25th July to reconsider the options for housing in Ramsden Bellhouse.

The following two options proposed by Basildon Council were debated and voted on;

### Option 1

" Retain the policy in relation to Ramsden Bellhouse, as set out in the now rescinded Publication Local Plan. This is based on evidence, follows the general steer provided by the Parish Council and residents in relation



# Safeclean®

BY  GUARDSMAN

Quality cleaning services from the furniture care experts

**CLEANING • STAIN REMOVAL**  
**PROTECTION • ALLERGY TREATMENT**



CARPETS



UPHOLSTERY



CURTAINS



MATTRESSES

**Call Geraint Williams today on 0800 387 798**  
**for a FREE no obligation quote**



to a preference around frontage development, and is considered to be the most appropriate strategy for housing growth in Ramsden Bellhouse, consistent with national policy. This would not prevent the Parish Council from preparing a Neighbourhood Plan around how to design of those site allocations, but this could frustrate the overall delivery of homes by reducing site capacity, causing conformity issues for the Neighbourhood Plan against the Local Plan prompting an early review."

#### **Option 2**

"Seek an alternative policy which instead provides the Parish Council with a housing target, and allows them, through a Neighbourhood Plan, to determine their own locations for housing allocations to meet the target. This would require a revised phasing of the housing target to provide a reasonable period of time for a Neighbourhood Plan to be prepared and sites made available. This option comes with a risk that the Parish Council may not get a plan in place, and housing in this settlement may not be delivered. It would also therefore be necessary to make clear that the first statutory review of the Local Plan would need to make provision in the settlement, if the Neighbourhood Plan had not otherwise been delivered."

A unanimous vote by the committee was for option 2.

#### **Neighbourhood Plan**

As many of the hundreds of residents that have attended any or all of the three meetings so far on this subject (plus Parish Council meeting) that have taken place over the summer months, you will be aware of the reasons behind why RBPC took the decision to recommend for consideration the concept of a Neighbourhood Plan for Ramsden Bellhouse.

A Neighbourhood Plan will deliver the opportunity for both the Parish Council and the residents to have more say on the look, style, feel and location of new properties. This approach will not just apply to the current Local Plan but also to those in the future (which could be every 5 years) when government once again requires Basildon Council to allocate further development within the village.

As already stated at meetings and as part of the process, the decision to proceed with the NP and the benefits it will provide will be subject to a voting process in the form of a referendum which will be carried on a majority basis.

At the last two meetings residents have been asked and have had the opportunity to put their names forward if they would like to assist in the

process in any way (including support and implementation) with the work that will need to be carried out before the referendum takes place, typical over a 18 -24 month period.

Details will continue to be posted on the RBPC Notice Board and website . For those residents that have already come forward with offers of help and assistance , we thank you for your continued support.

#### **Broadband**

Once again since the last report on the 'progress' of the plans for high speed broadband in the village, Essex County Council through the manager responsible for Superfast Essex has confirmed that it will be available between October and December 2018 (subject to no last minute issues) as per the e mail posted in September on the RBPC Notice Board.

As many residents will be aware during August/September Openreach have been clearing and preparing the gully's (underground pipes) that the fibre will be pulled through prior to connecting to the cabinet.

Whilst this option will provide residents with between 50 and 80Mbps subject to the distance from your property to the cabinet, many of you



## **Phill Bright**

### ***Interior and Exterior Painter***

41 Waverley Crescent

Wickford, Essex SS11 7LW

**01268 766457**

Mobile: 07944 679656





hopefully will of now received a letter from County Broadband advising that where they previously were going to offer a wireless option they are now going to provide a fibre to the home service which they claim will provide 1,000Mbps to the village.

A meeting and presentation has been arranged for 7.30 pm on 12th October at the Village Hall in order that you can obtain a better idea of what is on offer, and provided there is sufficient interest from the community they will start to install this in the Summer of 2019 they advised.

Finally as some of you may be aware a wireless service is being offered to Homestead Road residents by a private provider which is being beamed from the village hall, however this is not part of the Superfast Essex plan or is backed by Essex County Council.

Updates will be posted on the services that will be provided through Openreach, your own service provider and Superfast Essex as they continue to rollout.

*Richard Wellborne*  
*Chairman Ramsden Bellhouse Parish Council*



## **Teddies for Tragedies Essex Branch**

Not many teddies were distributed over the summer months, in fact only 540 went to Zambia making a grand total of 294,962 sent to 55 countries.

We also sent out to Zambia many toiletry boxes, blankets, cottons for sewing, bibles, bible notes and hymn books. Over the summer we have been concentrating on making blankets and these were sent to Syria, Eastern Europe and Zambia. I must thank Isabel and the Teddy Baggers for sewing the knitted squares or strips together to make wonderful blankets, and also the ladies who knit these and those who give me the whole blankets that they make. Some years ago when I went to Bosnia there was no colour anywhere and now to wake up to a lovely colourful blanket must be marvellous.

Now it is time to start filling the Christmas Shoeboxes as I write this in September, so my shopping list each week contains toothpaste, toothbrushes, soap, flannels, toys and sweets!

Wishing you all a merry Christmas and a very happy New Year. God Bless.

*Audrey Pegrum MBE Essex Branch Organiser*



## **Baddow Consulting Limited**

**(One to One Counselling)**

based in a tranquil and discreet location in  
Ramsden Bellhouse, Billericay, Essex CM11 1RH

I offer one to one Integrative Psychotherapeutic Counselling operating within the BACP Framework for good practice.

I work through a problem with you, rather than giving you advice, in order to help you find your best way of coping with any issues, thoughts or feelings that may be causing you concern.

### **Therapies offered**

Cognitive Behavioural Therapy, Psychodynamic Therapy, Transactional Analysis, Integrative

I am a member of the British Association of Counselling and Psychotherapy (BACP) and am fully insured.

For further information on the areas of counselling I deal with,  
[www.counselling-directory.org.uk](http://www.counselling-directory.org.uk) (Michelle Felstead)

Telephone no. 07885675407  
E-mail. [michelle.felstead@btinternet.com](mailto:michelle.felstead@btinternet.com)



## Dog Training

Do you have a puppy or young dog that needs some training? Then why not come along to our puppy class on Mondays at 7.15 pm. (Except 3rd Monday in the month). Friendly training and good socialisation for your dog. Look forward to seeing you.



Our obedience show on the 4th. August went very, very well. Everyone including the judges said they enjoyed their day. The weather was kind to us.

It was held at Battlesbridge Antique Centre and we owe a very big Thankyou to everyone who helped to make the show so successful especially to Fiona and Sandy and Ian, we are very grateful to you and it is appreciated.

Good luck to everyone who is entering shows for the rest of the season.

*Valerie Dean, Vice Chairman*



## Cubs Report

I am pleased to report yet another busy term for the 1st Ramsden & Downham Cubs group.

This term our cubs have been enjoying several activities both in the village hall and out and about to other facilities.

The cubs did some Geocaching at Crowsheath Lane with former Akela Lin. The Cubs have also been working on their Cyclist badge and helped celebrate American Independence night.

Back in June 14 Cubs, 2 parents and 3 leaders went to the County Mega Camp at Skreens Park where they took part in many activities over the weekend.

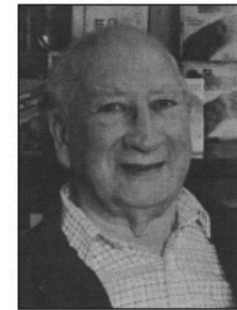
The Cubs have also been working on making a Paper Mache boat which they floated on the lake at the Autumn Camp at Thriftwood to get some sponsorship for this year's charity MIND (The Mental health Charity)

And on 26th September they had an out night at Thriftwood where they did climbing and backwoods cooking.

We have had a couple of our cubs moving up to Scouts at the end of this term and quite a few new Cubs joining us, we had 6 at the beginning of this term and will have another 3 joining us after half term. We are pleased to say our pack numbers are still going strong.

*Cub Leaders*

## In Memory of Bert Edwards 1920 - 2018



### Beau Bert

When dressed up in my gardening gear, I really cut a dash,  
If it wasn't for the safety pins, the girls would call me flash,  
The trousers are my demob ones, with patches by the score,  
I've been told they're indecent and should be banned by law.  
The waist band's getting rather tight, but don't blame me for that,  
I'd rather think that it had shrunk than I'm getting fat.  
The jacket is quite colourful, 'though mostly with old paint,  
It used to have a pattern but it's getting rather faint.  
The buttons are in contrast and the cuffs are rather frayed,  
Oxford bags were still in fashion when this coat was made.  
My shirts are army surplus, I don't know from which war,  
Possibly from world war one, or very likely Boer.  
My titfer is a pork pie, which has a touch of mould,  
But at least it stops my poor old napper getting cold.  
I've rescued bits from jumble sales, and called the dustman back,  
To make a very thorough search of the weekly refuse sack,  
Some day I'll have to part with it, and I may shed a tear,  
But I've got enough old clobber left to last another year.



**Christmas Bazaar  
Village Hall  
Saturday 1st December  
Father Christmas arrives  
midday**



## Bygone Years

As you read this magazine, the nation will be remembering the end of the 1914 - 1918 War. So how did this affect our area?

My father was a Special Constable and told me that the house called "Cassell" at the south of the village, and still there today, was built for a German Family. Because of this rumour had it that it was inhabited by German Spies who signalled to enemy aircraft. Whilst the rumours were quite unfounded, tensions ran high. Such was the wartime atmosphere.

There was a searchlight and three AA guns in the region of Pump Hill to the north of our village, and soldiers were billeted in the old manor house at the junction of Ramsden Park Road and Park Lane. This was demolished after the war.

Fourteen soldiers from the Bellhouse and the Heath were killed in this war. Their average age was 27. The Garland Family lost three sons.

A zeppelin was shot down on its way to bomb London in 1916 over Great Burstead. Twenty eight crew members were killed. In January 1918 a Gotha GV (German) was shot down near Victoria Avenue Wickford all three airman were killed.



Soldiers stationed in Ramsden Bellhouse 1914-18 manned searchlight and guns near Parsonage Farm, Park Lane



## Hire Services Ltd

Russell Gardens, Wickford, Essex, SS11 8BH



ESTABLISHED FOR OVER 38 YEARS, KSS HAVE BEEN PROVIDING QUALITY EQUIPMENT & SERVICE TO BOTH TRADE AND DOMESTIC USERS. WE CAN OFFER YOU ANYTHING FROM A SMALL POWER TOOL TO A 8 TON DIGGER OR DUMPER



WE HIRE

DIGGERS - DUMPERS - COMPRESSORS - MIXERS - COMPACTION EQUIPMENT - BREAKERS  
- CHIPPER SHREDDERS - TRENCHERS - ROLLERS - GARDENING EQUIPMENT - SCAFFOLD  
TOWERS - CHERRY PICKERS & MUCH MUCH MORE.



PLEASE FEEL FREE TO PHONE OR E MAIL US AT [HIRE@KSSGROUP.CO.UK](mailto:HIRE@KSSGROUP.CO.UK) WITH ANY PLANT & TOOL HIRE REQUIREMENTS YOU MAY HAVE AND OUR FRIENDLY EXPERIENCED STAFF WILL BE ONLY TO PLEASED TO ASSIST YOU.



**01268 769531**

**[www.kssgroup.co.uk](http://www.kssgroup.co.uk)**



## **St Mary's Church**

**Rector:** Rev. Stephen Robertson, The Rectory, Castledon Road, Downham, 01268 710370. Contact him with requests for Baptisms, Marriages, and Funerals etc.

**Churchwarden:** Mrs. Beryl Clements, 01245 601298

### **Services:**

- 1st Sunday: Evening Prayer, 6.30pm Summer, 3.00pm Winter when the clocks go back.  
2nd Sunday: Holy Communion, 9.30pm.  
3rd Sunday: Holy Communion, 6.30pm Summer, 3.00pm Winter.  
4th Sunday: Family Service, 10.30am.  
5th Sunday: Benefice Holy Communion rotating between St. Mary's, St. Margaret's, Downham, and St. Peter's, South Hanningfield, usually at 10.00am.

We invite everybody to join us at our Sunday services as above. If you are unfamiliar with church services, try for a start the Family Service on the 4th Sunday of each month at 10.30am - a short 40 minute service for all ages with tea/coffee and biscuits afterwards.

We continue to enjoy fellowship with our friends at the Baptist Church. Our next joint service will be the Remembrance Sunday Service in the Village Hall on 11th November at 10.45am with the Cubs and Scouts in attendance. Members' of both churches - men and women - meet every Monday (except Bank Holidays and school holidays) at the Baptist Church Hall anytime between 10.30am and noon for coffee and fellowship with interesting speakers on alternate weeks. Everybody welcome, particularly those who don't belong to either church.

Our fund raising during the summer went very well. First of all we had the Strawberry Cream Tea held in the Village Hall. This was well supported and raised £680. This has now been booked for next year on Saturday 15th June. In July, we held a concert by 'Men in Harmony' which was a really splendid evening of vocal entertainment and raised £860. Then we had our main fund raiser - the Flower Festival over the August Bank Holiday weekend. On Saturday at 6.00pm we again had the Sid Bolan Big Band Concert held in the Church grounds. This was an excellent evening and many compliments were made on the entertainment provided by the Band and the Vocalist. People brought their own picnics or purchased from the refreshment tent. The profit for

## **ELM FARM**

*We offer it all at Elm Farm*

**Elm Farm Florists and Gift Shop**  
**London Road, Crays Hill**  
**Billericay Essex CM11 2UZ**  
**01268 282062**

*Our new shop and Christmas  
Department is now open.*



*We have the best shop of  
its kind in the area.*



***Stunning and Beautiful Bespoke  
Christmas Decorations  
(also made to order)***

**HOME DECORATION PICTURES, PHOTO FRAMES,  
BABY GIFT SECTION, WEDDING GIFT SECTION.  
FLORISTRY DEPARTMENT, PLAQUES, SIGNS, GIFTS,  
CANDLES, ACCESSORIES, JEWELLERY, MIRRORS,  
FURNITURE, HOME ACCENTS**

**CALOR GAS - COAL AND LOGS**

*Follow us on Facebook and Instagram*



the evening after paying the Band was £955. We had a good number of people to view the floral displays, enjoy the refreshments and patronise the stalls, but unfortunately the Sunday was a 'wash out' with heavy rain most of the day, so not many people came and therefore we lost a day. The Songs of Praise which normally we have outside, was held in the Church. However, after one wet day we raised £3,700 including the Band profit which is more or less the figure we made last year. We are very thankful for the efforts of people living outside the village in the running of this event, and our heartfelt thanks go to this year's Flower Arrangers, Marquee Erectors, Stall Holders etc. I must say a VERY BIG THANKYOU to Beryl, our Churchwarden who organised the Flower Festival and spent many hours before and after the event at the Church arranging everything.

Our next event will be a Beetle Drive on Friday 9th November in the Village Hall at 7.30pm in aid of the Village Charity MIND. Tickets are £5 including refreshments available from Audrey on 01268 710757, or Beryl on 01245 601298, and our Carol Service will be held on Thursday 20th December at 7.30pm followed by mince pies, tea and coffee.

*Audrey Pegrum MBE*



*Fiona, Barbara, Freda and Suzy help at the Big Band Concert*

## Personal Page

*Congratulations to:*

**Eileen Smith** of 'Lorna Doone' Church Road on celebrating her 80th Birthday in September.

**Ben and Sheila** Bromley of the Bowls Club on their Golden Wedding.

**Rev. Suzy Edmondson**, on her ordination as a priest.

*Thanks to:*

By the time you read this I will have done my second sponsored walk for Dementia Research, and I must thank all those generous people who sponsored me again. At the time of writing this we have raised over £1000 this year for the research for a cure for this cruel and humiliating disease.

*In Memory of:*

**Bert Edwards** who died in September this year, 2018. Bert was a resident of the village for many years. He and his sister Lily lived in Glebe Road and eventually downsized to Wickford. Bert was a very keen gardener and a long serving member of the Ramsden Bellhouse Horticultural Society as Chairman and President. As the saying goes "what he didn't know about gardening wasn't worth knowing." He was also a founder member of the Ramsden Bellhouse Bowls Club and served as secretary at one time. Despite failing eye sight he was a very capable bowls player. He was a gentle and kind man who will be missed by many people. Our sincere sympathies go to his family.

**Ken Fisher** who died in September, of London Road, Crays Hill. He lived for many years in Glebe Road and was well known at Village Events. Our sympathies go out to Vivienne and the family.

*If you would like to put a personal message on this page contact the Editor.*



### PLEASE NOTE

We can deliver leaflets in the magazine  
Prices and further details from 01268 710428



## Horticultural Society

Since March we have had a Mini Show and our two major shows of the year.

Our Summer Show on the 2nd of June was well supported and the roses filled the room with fragrance. Having said this the real stars of the show were the 24 entries we had in the Floral Art classes. This is a record number of entries in recent years. Best in Show went to a first time exhibitor and new member Annabel Lowman for her brilliant set of broad beans. It is great to see new members entering our shows and even taking home the top prizes.

In July we held our fundraiser for the hall's charity of the year which is Basildon Mind. Over 60 people enjoyed Tea and Cake with Marie Lloyd. Our thanks go to Irene Bowkett for a thoroughly entertaining description of the life and time of Marie Lloyd. We are also thrilled to be able raise a sum of £562.00 for Basildon Mind.

Our biggest event of the year was our Autumn Show held on Saturday 15th September. The date of the show had to be moved due to lack of availability of judges. This won't happen next year as next year's judges have already booked. We had a fantastic 228 entries which given the difficult weather conditions this year is outstanding. The entries looked great as did the brand new flooring in the hall. Tony Rogers' 10 Large Shallots were Best in Show. We also held the weigh in for our annual seed potato competition. We had 28 bags returned to be weighed. The winner of the new trophy along with all the other trophies will be announced at our AGM in November.

There were some fantastic dahlias on display at our Autumn Show and it was also the topic of our September Meeting where Nick Dobson talked to us about dazzling dahlias. The daffodil bulbs were also distributed to our members to be grown for our Mini Show next March. These will need to be planted before the October meeting. Tulip bulbs will be available to purchase at our October meeting for the April Mini Show next year.

Our last monthly meeting is on 15th October where Carol Halfpenny will talk to us on the Inca Trail. On Friday 19th of October our flower arranging course will run again for the next 6 Friday morning's. These sessions will have a Christmas theme and anyone interested should contact Val Jones. Lastly, our AGM will be on Monday 19th November.

I will shortly begin work on the 2019 Show Schedule with dates of the 2019 shows to be revealed soon.

*Thomas Carpenter, Show Secretary*

## P. M. ANDREWS

Family Butcher



*Quality*

*Fresh & Frozen Meat*

5 Downham Road

Ramsden Heath

Billericay, Essex

**Telephone:**

**01268 710453**

## HALL'S

*Pet & Animal Foods  
Bulk Foods*

**LARGE RANGE OF  
PET & GARDEN  
ACCESSORIES**

**71 High Street  
Wickford**

**01268 732093**

## Printers Ad

WREATHS CROSSES  
BOUQUETS

*Eileen's  
Florist*

Mr & Mrs E J Woods  
The Shrubbery  
London Road  
Wickford

**01268 735388**

WEDDING FLOWERS



## Mustardy Macaroni Cheese

*This recipe is one for the vegetarians*

Serves 4

### Ingredients

300g pasta  
150g creme fraiche  
100g mature cheddar or vegetarian alternative - grated  
½ tablespoon of Dijon mustard  
Some fresh parsley (optional)  
4 tablespoons of dried breadcrumbs  
Extra virgin olive oil for drizzling

### Method

Bring a pan of salted water to the boil then add pasta. Cook for 8 minutes or until al dente then drain reserving a few tablespoons of the pasta water.

Mix the pasta water with the crème fraiche in a large pan over a low heat until smooth. Remove from heat and add most of the grated cheese then stir through the mustard. Season to taste, chop parsley if using and stir into the sauce along with the pasta. Transfer to a 1 litre oven proof dish scatter with the breadcrumbs and the rest of the cheese. Drizzle over a little oil. Place under a hot grill for 12 minutes or until golden. Serve with a salad.

A combination of different cheeses can be used.

*Joan Wright*



Happy Christmas to  
all our Readers



## BELLHOUSE ESTATES

Bellhouse Estates the local village estate agent for all your properties needs.

Make the right decision regarding the sale or purchase of your home, for a first class service from a company you can trust.

Call Lindsay or Kathy on 01268 711133



Bellhouse Estates

Endeavour House, Church Road, Ramsden Bellhouse, Billericay, Essex CMI1 1RN  
Telephone: 01268 711133 Email: bellhouseestates@email.com www.bellhouseestates.co.uk

## Mercedes and German Car Specialists



### HOLFORD MOTOR COMPANY

MOT, servicing and general repairs  
Up to date tuning and diagnostic equipment  
Free collection and delivery



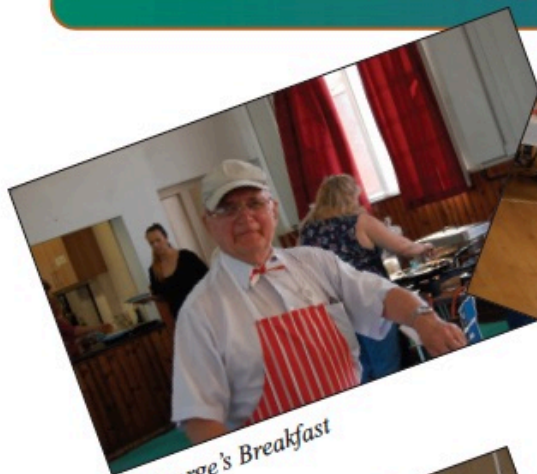
Home Office Mobile  
01268711578-01708397670-07885749651

[www.holfordmotors.co.uk](http://www.holfordmotors.co.uk)





# Village Events throughout the year



St George's Breakfast



St George's Breakfast



Big Band Concert, St Mary's



Enjoying Big Band Concert



St George's Breakfast



Ann and Abby organise the Musical Festival



Flower Festival, St Mary's



Flower Festival, St Mary's



Music Festival



Music Festival

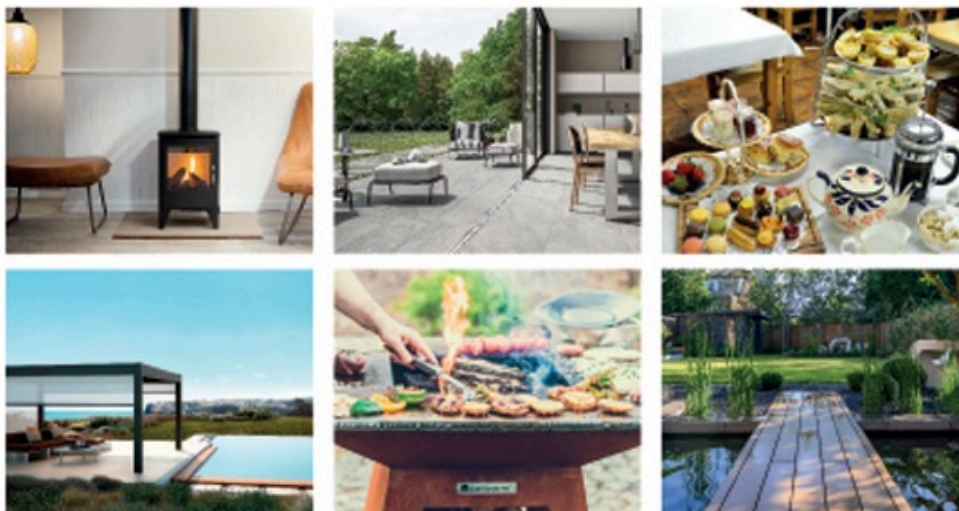


Four generations of Isabel's family walk for Alzheimer's Research



3000 other people walk with them!!





## LOWER BARN FARM

*Everything home and garden*

www.lowerbarnfarm.co.uk • sales@lowerbarnfarm.co.uk  
Lower Barn Farm, London Road, Rayleigh, Essex SS6 9ET

01268 780991



## Lambourne Caterers Ltd.



### *Catering for all Occasions*

*Weddings – Christenings – Private Functions  
Bereavements - etc.*

*We pride ourselves on quality home made food.  
Quality catering at affordable prices*

Telephone- 01268 711820  
Mobile - 07778 809723  
Email: [contact@lambournecaterers.co.uk](mailto:contact@lambournecaterers.co.uk)  
[www.lambournecaterers.co.uk](http://www.lambournecaterers.co.uk)

## The House on the Moor

Richard Myers was driving across Bodmin Moor on a warm November evening. The cassette player was blasting out a selection of his favourite classical tunes. It had been a successful day for the travelling salesman and his leather brief case was full of farmer's new orders. Feeling happy and not fully concentrating he didn't realise he was driving into a mist. Soon it turned to thick fog and Richard realised he wouldn't be able to make it home to his new wife at their love nest in Redruth. He must try and find a Hotel or Guest House where he could get an evening meal and a bed for the night.

Richard stopped the company car in a lay-by and looked all around. Down in the valley he could just make out some lights coming from a large house. Hoping that it would be a place to rest up he set off down the small lane. With careful driving he reached the house with the lighted windows. The brightly painted sign on the gate read The House on the Moor. So it wasn't a Hotel or Guest House but perhaps he could get some



## Grahame Farley

## LOCAL CARPENTER JOINER

*All aspects of building work undertaken*

- ROOFING • LOFT CONVERSIONS
- TILING • PATIOS
- BLOCK PAVING • DECKING
- SUMMERHOUSES ETC

*Call for Free Estimates and Advice*

**01268 710623**

Mobile: 07793 020745

*References Available*



help or at least directions. A sharp knock on the door was answered by a very pretty young girl with a rose in her hair, wearing a long gown and a garland of flowers hung from her neck. This must be flower power he thought as he explained his dilemma. The girl said her name was Jane and he should come into the kitchen and have some refreshment. In the corner lying in a wicker basket was a very big black dog which growled but didn't move. Richard had thoughts, was this the 'Hound of the Baskervilles'. Jane sat him down at a big well scrubbed wooden table and he was served with a big plate of venison stew with suet dumplings. This filled Richard but he wasn't allowed to leave the table until he had eaten a portion of homemade apple tart and custard, and then there was the cheese and biscuits that followed.

After this big meal he was shown into the lounge. Sitting on the floor on comfy cushions were Jane's friends. All the young men and girls had very long hair and were smoking from very long pipes. Soft modern music was coming from the two speakers mounted on the wall.

Richard soon started to feel drowsy and asked if he could have a bed for the night. He climbed up two flights of rickety stairs and found a bedroom in the attic. The bed was old, very comfortable but the room was damp and cold. After a couple of hours tossing and turning he eventually fell into a very deep sleep. He was awoken next morning when the nearby church clock struck seven and a cock crowed. Going to the window he looked out to see that the fog had cleared and that there were distant views of the Cornish countryside. The strange thing was however that the house was silent. Richard got dressed straightened the bed and started to go down the stairs. The house was empty Jane and her friends had all vanished, gone who knows where. He let himself out by the front door found his car and drove to his office in Truro .

Having related the story on many occasions, one warm spring day he decided to go for a drive taking his wife to find The House on the Moor. After a pub lunch and a little searching they found the lane and drove down to the big house. He found the gate but the house had gone there was just a large expanse of wild flowers. A pretty young girl with a rose in her hair smiled as she picked the blooms and put them into her wicker basket.

*Mike Craig*

## **Your Baptist Church in the Village**

What a long hot and dry summer we have had and the warm sunny weather continues even now, are we really coming into autumn? The calendar says we are, and at RBBC we are planning our autumn and winter services and activities. We are having our Harvest Festival Service on 21st October at 10.30 am and we would love to have people from the village and surrounding areas celebrating with us as we give thanks for the harvest. All the produce given will be passed on to St Luke's Hospice.

In November we are holding a Men's' Breakfast on 10th November at 9.30 in the Emmanuel Hall of our church, this will be a full English breakfast and we will have Bill Park as our speaker. For details please contact Marion Jerrom on 01268 710287.

The following Saturday 17th November we have a Ladies Retreat Day at Mulberry House Ongar, all ladies are welcome. Again details of this day are available from Marion Jerrom on 01268 710287.



**"The most thorough  
Carpet & Upholstery Cleaning ever seen -  
or it's Free!"**

*If your not 100% delighted with any aspect of my cleaning  
service, I'll quickly return and give you a free re-clean.  
If I can't make you happy - for whatever reason  
I'll refund your money 100%*

*'Family owned operated business  
Established since 1984'*



**CARECLEAN**

**01268 508814**



And so Christmas will be with us before we know it together with cooler days, although that is difficult to believe bearing in mind the warmth we are experiencing at present. We are planning to have our combined Toys and Tins and Carols by Candlelight Service on 16th December at 4.00p.m. The Toys and Tins part of the service is where gifts of dry food goods, tinned food, toiletries, and new toys and children's books and games are donated and then given to the Basildon Resource Centre for distribution to local families and people in need. Again we hope that people from the village and surrounding areas will be able to join us. We will also celebrate Christmas Day with a short service at 10.30. Again all are welcome.

Our Monday Morning Coffee Break continues, which is held between 10.30 and 12.00, on as the title suggests, each Monday morning; and serves tea, coffee, toast and often cakes. Our other regular is the Drop in Breakfast, held on the first Saturday of each month, this is continuing to prove very popular, and we serve a full English breakfast or any permutation, between 9.00 and 11.00 am for a donation of £3.00. These two regular morning "Drop-ins" offer the opportunity for food and chat. All are invited to come and try these, and you will be guaranteed a warm welcome.

Please feel free to read more about RBBC in our church Review magazine, produced quarterly and which is available free in the village shops in Ramsden Bellhouse and Crays Hill or at RBBC.

Our Sunday services are held at 10.30 am each week. Please do come along and give us a try. You will be very welcome.

*Val Rook, Church Secretary*



## Scouts Report

As usual the scouts have undertaken a wide range of activities and since March the programme has included: an Easter Egg balloon pop, toasting hot cross buns and crumpets over an open fire and on St George's Day, balloon jousting and a cream tea (put together by the scouts),

The scouts work towards a range of Activity Badges: the Pioneering Activity Badge by building a pasta tower (how tall can you go!) and knots; the Air Research Activity Badge and Naturalist Activity Badge. The Challenge Badges are more involved and each covers several areas: for the Skills Challenge Badge the scouts have covered ironing, sewing and bed making and most recently the commencement of timed fitness

tasks that will be measured over a number of weeks: pedalling on a static bike, star jumps, standing jump, a point to point run and how long can two sandbags be held at arms-length!

Weekly games frequently include football and also newspaper hockey, basketball, football cricket (kick it) and rounders. These games are always very competitive.

All of the activities mentioned above took place at our headquarters, Ramsden Bellhouse Village Hall.

One a month we have an 'out night' and these took us to: Partyman World and an evening doing a community litter pick in Ramsden Heath where there was also a discussion about the importance of recycling.

Two scouts and two leaders went to Belgium during the summer on the Billericay & Wickford Scout District camp, near Bruges.

We continue to encourage the scouts to work as a team, respect the environment, and take responsibility for their possessions and those of others and to 'Be Prepared.'

We currently have 12 scouts, with plenty of room for new recruits, and



## ESSEX TYRE COMPANY LTD



——— MAIN DEALERS ——— KUMHO 

- All major brands supplied and fitted
- 4SITE 4x4 tyre centre. UK's only dedicated network of 4x4 tyre specialists
- State of the art fitting equipment, ensuring your alloys are not marked
- 4 wheel laser alignment
- Computer balancing
- Centreless wheel balancing, for French alloys
- Nitrogen tyre inflation
- Puncture repairs to British safety standard
- Brake pads and discs supplied and fitted



**Whitesbridge Industrial Est., Crays Hill**

**01268 271544** [www.essex-tyres.co.uk](http://www.essex-tyres.co.uk)



meet on Wednesday evenings during term time at Ramsden Bellhouse Village Hall from 7.30 to 9.30 and the age range is from 10½ to 14½. New recruits are always welcome and for further information please call Chris on 01277 652337 or 07904 225200. Also please see our website: <http://www.1stramsdendownhamscouts.org.uk>

*Chris Maker, Scout Leader*



### **Bellhouse Preschool**

We have been back a few weeks now after the summer holidays and we have been busy making new friends and missing our old friends who have gone off to "big school"

We have visited the Library bus that parks up at the hall car park and we have borrowed lots of good books for our book corner.

We have been talking about our holidays and the different places we visited over the summer break, we have been pretending to be travel agents booking holidays for our friends, some of us have been pilots flying aeroplanes and one of our friends made a train out of chairs and boxes and we all went to the seaside.

One of the preschool grandmas kindly gave us some cooking apples and with the help of our aunties we made a fab apple crumble which tasted really yummy. There is more fun planned over the next few weeks, we will be enjoying the last of the autumn sunshine the leaves will be falling and we will be celebrating harvest and then . . . it's the nativity !!!

*Annmari*



**PLEASE KEEP OUR VILLAGE TIDY  
CHECK YOUR VERGE AFTER  
DUSTBIN DAY**

### **Bowls Club**

Throughout the summer many friendly matches have been played both home and away, glad to say they have been very popular with members names going up on the list very quickly. Results have been mixed, but the main thing is to have a really good game with our friends from other clubs. We are now preparing for the league season which begins in October.

A growing number of our members are taking part in competitions outside our own club with some success. Congratulations to Stuart, Jane, Melvin and Barry for being runners up at the Hatfield Peverel Competition. Steve, Kay, Emily & Peter recently won at Island beating a team from Willow Park that had Emily's Mum Sylvia guesting for them. Kay, Emily & Peter also came runners-up in a recent competition at East Hanningfield. Quite a few of our members also took part in Friends of Essex competitions over the May Day bank holiday weekend and had a very enjoyable and mostly successful time

In our own club competitions Tom Shepard beat Steve in a very close final. In the pairs David & Sylvia defeated Steve & Tom Shepard. Thanks to Roy for organising both these competitions.

Of course along with the bowls there are the many days of cakes as we continue to celebrate members birthdays. Special celebrations included Eileen's 80th birthday, think we managed to have the card presented without her signing it herself on this occasion, and Ben & Sheila's Golden Anniversary. As well as the happy events we have had members who have not been so well and we send them our best wishes. Sad to report the death of one of our founder members and our first life member Bert Edwards aged 98. Bert continued to play bowls well into his nineties and was always near the jack even though he couldn't see. Bert lived in the village for many years before downsizing to a place in Wickford from which he still came to bowls. Two of our long term members, Tom & Sylvia, have recently moved to a place near Frinton and we hope they will be very happy in their new home.

We are pleased that we have such a flourishing friendly club, news of which can be found on our website

[ramsdenbellhouseSMBC.wordpress.com](http://ramsdenbellhouseSMBC.wordpress.com)

*Kay Debenham*



## Social Events

### Line Dancing

Our line dancing classes are still taking place every Monday (except Bank Holidays) 2.30 pm. for an hour and only £2.00. It is a very pleasurable hour dancing to a wide range of music from Country to up to date popular music. Although we have a good attendance we would love to welcome new members, so why not give us a try and pop down to the village hall for an hour.

### St George's Day Breakfast

We had a great turn out for the Breakfast, 200 people served in three hours. This isn't a record but enough people to keep the cooks, waiters and background helpers on their toes. It was a great atmosphere, neighbours catching up with neighbours enjoying the great value breakfast, 2 rashers, 2 sausages, egg, baked beans, mushrooms and tomatoes, toast, orange juice, coffee and tea all for £6.00 half breakfast £3.00. Why not join us next year and if you would like to get involved in the day we would welcome your help.

### Ramsden Bellhouse Music Festival

We couldn't have asked for a nicer day, perfect weather for a music festival. The ticket price remained the same as last year with a barbecue included but once again we had a very successful day. The gates opened at 2.30 pm and the first act came on at 4. pm. and everyone settled down to an afternoon and evening of great music. First the D'Ukes making a second appearance followed by Sarah Louise singing motown and country, next Johnny Mack a George Michael tribute act, finishing with Shot 2 with a soul finale and laser show. Each act was greeted with great enthusiasm and appreciation and the hard work by all the committee, friends and helpers all came together. A big thank you to Chris Short who supplied the stage (part of a very well concealed lorry) and to Abby Short who organised the acts. A profit was made of £1620 which will go towards the up keep of the village hall.

See you next year!!

*Ann Wellborne. Social Secretary*

*If you have a story to tell contact the Editor*

## Suzy Writes

All of us make decisions throughout our lives, some of which are life changing, like getting married, having children, moving house, or changing jobs. Every decision we make will have it's own consequences, some more beneficial or catastrophic than others - depending on what we decide, and whether it turns out to be the right decision or, if in hindsight we realise that perhaps it wasn't the best thing to do after all.

If you've ever watched those budgeting programmes "Eat well for less" or 'Shop well for less', it's obvious how advertising, or the misconceived ideas people can have, enable those featured to get their shopping decisions majorly wrong!

The decisions we make based on what we assume we know, can often be misleading or be influenced by our prejudices, our fears, our hopes that may or may not be realistic, or simply because the grass seems greener on the other side of the fence!

As a new Christian, I was given some verses from the book of proverbs that said 'Trust in the Lord with all your heart, never rely on what you think you know, remember the Lord in everything you do and he will show you the right way.' These verses have proved invaluable during the 28 years of my Christian life so far. I have learned that on those occasions when I've prayed about things, they usually turn out OK in the long run. I've come to realise that God always answers our prayers, but not always how we would have wanted or hoped. He doesn't prevent the hardships of life happening to us, but he does carry us through the distressing or difficult times in our lives. I've learned to trust him in adversity and for the outcome of situations, that in his hands, in the fullness of his time, all will be well.

Having spent more of my life without God than I have with him, the contrast between the before and after is enormous. Knowing God has turned my life around, and I will never regret the decision that I made in 1990 to turn to Christ and follow in his ways.

The decisions we make about God like all decisions are life changing - and we only have two choices in all reality - we can accept him or reject him. This is undoubtedly the biggest and most important decision you will ever have to make, and the consequences of that decision will be for eternity.

*Revd. Suzy Edmundson*



## Broomway

*The Most Dangerous Path in Britain;  
Just a Few Miles Away from our Village*

If you were to think about the most dangerous path in Britain, you may come up with a mountain pass or a steep track along a cliff edge. You might certainly overlook anywhere in Essex, with its low hills and country lanes. But if you did so, you would miss that we possess arguably the most dangerous path at all. It's a path so perilous that there are records of dozens of people having sadly lost their lives on this path and it is very likely that dozens more have died here without their deaths ever being recorded.

So where is it? This is a path known as the Broomway, an ancient track between Wakering Stairs and Foulness Island. Before a road bridge was constructed in the twentieth century, this was the main route, across mud and sand, from the mainland and the island. The name, 'The Broomway' comes from the posts that once lined the route to help people find their way across - and I've heard two versions of this story, either that they resembled brooms, or that they had a sprig of broom on them.

The danger comes from the quicksands and the incoming tides. When I walked the Broomway, I did so with a guide, who knew the safest route (I wouldn't walk this path without one). Setting off from Wakering Sands is setting off into a vast expanse of sand. Foulness is not visible at this point; the only land visible is the coast behind and at times, the distant Kent coast across the Thames Estuary. Get lost, or be too slow, and the tide will rush in from unknown directions and cut you off.

I suppose the obvious question today is why would anyone still walk the Broomway at all? Well, there is one good reason - it is surely one of the most beautiful paths in Britain.

The beauty lies in the quality of the light in this place. Under a huge sky, the sunlight on the sand is dazzling. It's like walking under an arc of light. I was not surprised to hear that this path is a favourite of artists and photographers. But this same, dazzling light is also disorientating. It was clear to me that if I didn't follow the right route, then I could easily wander off in the wrong direction and become lost.

The path from Wakering Stairs leads to Foulness Island. Foulness has its own secrets, of course; it is owned by the MOD and is used for firing and testing weapons - and arriving there by the back door, so to speak, leads you to an entrance under surveillance by cameras and surrounded

## Images Beauty Rooms

**01268 711577**

**Our amazing Services at the salon are:**

**FACIALS** - CACI, Decleor and CACI Synergy

**BODY TREATMENTS** - CACI, Massages, Hot Stones, Decleor body scrub, Mother to be pamper package

**TANNING** - Stand up sun bed and spray tan's

**MAKE UP** - Wedding and Occasion

**WAXING** - Warm wax and hot waxing

**ELECTROLYSIS**

**EYES, LASHES AND BROWS** -

Billion Dollar Brows, Russian lashes, Express lashes, Nouveau semi permanent lashes, Lash Lift, Party lashes, strip lashes, eyebrow shape and tint.

**HANDS & FEET** -

Manicures, pedicures, OPI Gel polish, File and polish, Acrylic nails.

**COSMETIC SERVICES** -

Anti wrinkle injections, Jowl and neck bands, Lip filler, cheek filler, tear trough (under eye bag removal), Nasal lines, smokers lines, PDO thread lift, chemicals peels and fat freezing.

Pamper parties for children - £20 per child

**GIFT VOUCHERS AVAILABLE**

Please enquire about our special offers! Or see our website  
[www.imagesbeautique.co.uk](http://www.imagesbeautique.co.uk)

7-9 Downham Road, Ramsden Heath, Billericay, Essex CM11 1PU



by warning signs. But Foulness also has its own wildlife and countryside, and, in summer, the edge is green with samphire and coastal plants.

The Broomway is a path to be walked more than once. It will look different every time, the light and sky ever changing, and ever magical.

*Wendy Swift*



## Fun Whist

Our whist evenings, on the second Saturday of the month in the Village Hall, have been going from strength to strength. We have a good core of regulars who make a very pleasant and friendly evening. Hopefully this will continue through the forthcoming darker evenings to maintain the social nature of the evening as well as the wider implications of getting to know your Village neighbours.

We were very sad to hear that Bert Edwards, a stalwart of the Village, who moved to a smaller property in Wickford some years ago had recently died. Bert was a real 'one off'! Massively important in the Horticultural Society with knowledge to put Monty Don on the spot, as well as a star bowler in the Bowls Club he was also involved with Whist. At 98 he had a good innings (cricket being another of his great strengths and interests) but his constant thirst for knowledge and interest in life meant he was never dull or bored.

Farewell Bert we remember you with great affection.

Whist for any 'newbies' who would like to join us and give it a go is at 7-15pm in the Village Hall on the second Saturday of the month. Look forward to seeing you there!

*Angela Hodivala*



## Dancing

Here we are again after a long hot summer, autumn has arrived which means that Christmas is not far behind.

Prior to our 3 week lacuna in the summer whilst the floor in the old hall was replaced we held a summer buffet dance. The new floor is well worth the money spent and we thank the management committee for this.

We held our charity square dance in May but the turn out was disappointingly low and we were not able to raise as much money as we would have liked.

Our members will be happy now that a new season of Strictly Dancing has hit the small screen.

Now that the holiday period is over we will no doubt be shortly organising our Christmas Ball.

Keep Dancing

*Barry Gardiner*





## Emblem Group

18 The Broadway, Wickford  
Essex, SS11 7AA

- Tel: 01268 768797
- Fax: 01268 764540
- Web: [www.emblem-group.co.uk](http://www.emblem-group.co.uk)
- Email: [russell@emblem-group.co.uk](mailto:russell@emblem-group.co.uk)

School Uniform • Workwear • Embroidery • Garment Print • Teamwear



## Jim Hamilton Talks

Dear Friends

It was about a year ago we noticed something was wrong! Our little Baptist chapel in Ramsden Bellhouse is almost 100 years old. The church has met there faithfully throughout that time, seen many changes, experienced good times and bad, joys and sorrows, hopes and dreams, just like every church. Twenty one years ago the Emmanuel Hall was added providing opportunities for new activities and events and it has always been well used. Last year however we noticed something - large cracks had appeared along one of the walls of the church itself. They were big enough to insert a finger through and they appeared in different places along the wall. We sought some professional advice and were told that the immediate cause was the long warm and dry summer. We were told to monitor the situation and when the weather cooled and the rains came the cracks closed up a bit. You can guess what has happened in this year's long, hot summer. The cracks have reappeared larger than ever, more have opened and the effects are now being seen inside the building. Further investigations have taken place and we have discovered what the real problem is. The foundations are too shallow! In the '20's building regulations were not as strict as now and no account was taken of the poor quality of the soil. When the new hall was joined to the building its foundations were deeper and although I don't understand the technicalities, this created a potential problem that has now developed. The building itself is safe but something will have to be done long-term and we will face a financial challenge.

It has set me thinking and reminded me of something. Foundations are vitally important. A building can look beautiful and impressive, but if it not built on deep and strong foundations problems will soon emerge. Jesus spoke of this when He told the story of the wise and foolish builders. The foolish man built his house on sandy land. The house looked brilliant, but when the storm came it collapsed because of the foundations. The wise man chose rock and when the storm came the house stood strong. Jesus was reminding us that in life the storms do come, they take many different forms, some are more devastating than others, but how we cope is dependant on the foundations we have established, and Jesus is implying that the surest and safest way to cope with the storms is to build our lives on Him as our foundation and source of security. How do you cope when the storms come? What is the foundation and basis of security in your life? In our little church with the

cracks and shallow foundations we love to sing the hymn with this chorus:

"Christ alone, cornerstone, weak made strong in the Saviour's love  
Through the storm, He is Lord, Lord of all."

As we enter Autumn and approach another winter, I pray that you will know the security of Jesus as the sure foundation in your life.

Blessings

*Jim Hamilton, Minister, Ramsden Bellhouse Baptist Church*



### Editors Note

**Please let me have more input  
from the younger generation.**



## STITCHING TIME



*Sewing classes that fit around your home and family.*

Don't sit home alone - Use your spare time to meet new friends, learn new skills or build on your existing skills to become an expert.

**No advance fees to find - pay only when you attend**

- ✂ Beginners sewing - crafts
- ✂ Overlocking courses
- ✂ Beginners dressmaking
- ✂ Pattern-making courses
- ✂ Improvers dressmaking
- ✂ Childrens' classes
- ✂ Advanced dressmaking
- ✂ Costume making

Workshops £20 for 3 hours  
Short Courses £30 for each 3 hours  
Machine Hire £3 or bring your own  
**FIRST WORKSHOP HALF  
PRICE**

Every Monday at Ramsden Bellhouse Village Hall, Church Road, CM11 1RN  
**Morning Workshop** is 9.30am to 12.30pm and **Afternoon Workshop** is 1.30pm to 4.30pm  
www.stitchingtime.co   katrina.stitchingtime@gmail.com   07538 132454



## Bus Timetable

### *Timetables for Service No 10* *Monday to Friday & Saturday*

#### Monday to Friday

##### Basildon to Shotgate

Service No.:	10	10	10	10	10	10
Notes:	ECC	ECC	ECC	ECC	ECC	ECC
Basildon Hos, Main Ent[A]	0836	1044	1250	1450	1654	1828
Basildon, Bus Station [M] Arr	0841	1049	1255	1455	1659	1833
Basildon, Bus Station [M] Dep	0843	1051	1257	1457	1701	1835
Miles Gray Road, opp B&Q	0847	1055	1301	1501	1705	1839
Noak Bridge, South Wash Road	0851	1059	1305	1505	1709	1843
Crays Hill, Shepherd & Dog	0855	1103	1309	1509	1713	1847
Ramsden Bellhouse, Glebe Road	0901	1109	1315	1515	1719	1853
Ramsden Heath, White Horse	0907	1115	1321	1521	1725	1859
Brock Hill, Downham Road	0914	1122	1328	1528	1732	1906
Church End Lane	0917	1125	1331	1531	1735	1909
Wickford Broadway, The Swans	0919	1127	1333	1533	1737	1911
Wickford, Rail Station	0921	1129	1335	1535	1739	----
Wickford Broadway, The Swans	0923	1131	1337	1537	----	----
Westfield Close	0927	1135	1341	1541	----	----
Beauchamps School	0929	1137	1343	1543	----	----
Shotgate, Post Office	0931	1139	1345	1545	----	----
Hodgson Way	0933	1141	1347	1547	----	----

##### Shotgate to Basildon

Service No.:	10	10	10	10	10	10
Notes:	ECC	ECC	ECC	ECC	ECC	ECC
Hodgson Way	----	0936	1144	1350	1550	----
Shotgate, Post Office	----	0940	1148	1352	1554	----
Westfield Close	----	0944	1152	1354	1556	----
Beauchamps School	----	0950	1158	1359	1601	----
Wickford Broadway, The Swans	----	0955	1203	1404	1606	----
Wickford, Railway Station	0750	0957	1205	1406	1608	1742
Wickford Broadway, The Swans	0752	0959	1207	1408	1610	1744
Church End Lane	0754	1001	1209	1410	1612	1746
Brock Hill, Downham Road	0758	1005	1213	1414	1616	1750
Ramsden Heath, White Horse	0803	1010	1218	1419	1621	1755
Ramsden Bellhouse, Glebe Road	0809	1016	1224	1425	1627	1801
Crays Hill, Shepherd & Dog	0812	1019	1227	1428	1630	1804
Noak Bridge, South Wash Road	0817	1024	1231	1432	1634	1809
Miles Gray Road, opp B&Q	0819	1026	1233	1434	1636	1811
Basildon, Bus Station [F] Arr	0824	1031	1237	1437	1640	1816
Basildon, Bus Station [F] Dep	0826	1033	1239	1439	1643	1818
Basildon Hosp, Main Entrance	0831	1038	1244	1444	1648	1823

Notes: ECC Operated under Contract to Essex County Council

#### Saturdays

##### Basildon to Shotgate

Service No.:	10	10	10	10	10	10
Notes:	ECC	ECC	ECC	ECC	ECC	ECC
Basildon Hos, Main Ent[A]	0836	1044	1250	1450	1654	1828
Basildon, Bus Station [M] Arr	0841	1049	1255	1455	1659	1833
Basildon, Bus Station [M] Dep	0843	1051	1257	1457	1701	1835
Miles Gray Road, opp B&Q	0847	1055	1301	1501	1705	1839
Noak Bridge, South Wash Road	0851	1059	1305	1505	1709	1843
Crays Hill, Shepherd & Dog	0855	1103	1309	1509	1713	1847
Ramsden Bellhouse, Glebe Road	0901	1109	1315	1515	1719	1853
Ramsden Heath, White Horse	0907	1115	1321	1521	1725	1859
Brock Hill, Downham Road	0914	1122	1328	1528	1732	1906
Church End Lane	0917	1125	1331	1531	1735	1909
Wickford B'way, The Swans	0919	1127	1333	1533	1737	1911
Wickford Rail Station	0921	1129	1335	1535	1739	----
Wickford B'way, The Swans	0923	1131	1337	1537	----	----
Westfield Close	0927	1135	1341	1541	----	----
Beauchamps School	0929	1137	1343	1543	----	----
Shotgate, Post Office	0931	1139	1345	1545	----	----
Hodgson Way	0933	1141	1347	1547	----	----

##### Shotgate to Basildon

Service No.:	10	10	10	10	10	10
Notes:	ECC	ECC	ECC	ECC	ECC	ECC
Hodgson Way	----	0936	1144	1350	1550	----
Shotgate, Post Office	----	0940	1148	1352	1554	----
Westfield Close	----	0944	1152	1354	1556	----
Beauchamps School	----	0950	1158	1359	1601	----
Wickford B'way, The Swans	----	0955	1203	1404	1606	----
Wickford Rail Station	0750	0957	1205	1406	1608	1742
Wickford B'way, The Swans	0752	0959	1207	1408	1610	1744
Church End Lane	0754	1001	1209	1410	1612	1746
Brock Hill, Downham Road	0758	1005	1213	1414	1616	1750
Ramsden Heath, White Horse	0803	1010	1218	1419	1621	1755
Ramsden Bellhouse, Glebe Road	0809	1016	1224	1425	1627	1801
Crays Hill, Shepherd & Dog	0812	1019	1227	1428	1630	1804
Noak Bridge, South Wash Road	0817	1024	1231	1432	1634	1809
Miles Gray Road, opp B&Q	0819	1026	1233	1434	1636	1811
Basildon, Bus Station [F] Arr	0824	1031	1237	1437	1640	1816
Basildon, Bus Station [F] Dep	0826	1033	1239	1439	1643	1818
Basildon Hosp, Main Entrance	0831	1038	1244	1444	1648	1823

Notes: ECC Operated under Contract to Essex County Council

## Village Events

### NOVEMBER

Saturday 3rd	Crunch	9am - Midday	Village Hall
Friday 9th	Charity Beetle Drive	7.00pm	Village Hall
Saturday 10th	Fun Whist	7.15pm	Village Hall
Sunday 11th	Remembrance Service	10.45am	Village Hall

### DECEMBER

Saturday 1st	Christmas Bazaar	Midday	Village Hall
Saturday 8th	Fun Whist	7.15pm	Village Hall
Thursday 20th	Carol Service	7.30pm	St Mary's Church
Sunday 16th	Carols by Candlelight	4.00pm	Baptist Church

### JANUARY

Saturday 12th	Fun Whist	7.15pm	Village Hall
Sunday 27th	Village Hall AGM	3.00pm	Village Hall

### FEBRUARY

Saturday 9th	Fun Whist	7.15pm	Village Hall
Saturday 23rd	History of Ramsden	2.00 - 5.00pm	Village Hall
Sunday 24th	History of Ramsden	11.00am - 5.00pm	Village Hall

### MARCH

Friday 1st	Women's World Day of Prayer	11.00am	Baptist Church
Saturday 9th	Fun Whist	7.15pm	Village Hall
Saturday 16th	Crunch	9.00am - Midday	Village Hall

### APRIL

Saturday 13th	Fun Whist	7.15pm	Village Hall
Sunday 28th	St George's Breakfast	9.00am - Midday	Village Hall



## Village Directory

<b>Village Hall</b>	Chairman	- Clive Jeffree	710559
	Booking Secretary	- Audrey Pegrum	01268 710757
	Secretary	- Abby Short	01268 711675
	Treasurer	- Derek Swan	710478
	Social Secretary	- Ann Wellborne	710250
<b>Magazine</b>	Editor	- Isabel Johnson	710428
	Advertising	- Isabel Johnson	710428
<b>Dog Training</b>	Monday (except 3rd in month)		
	7.15pm - 10pm	- Sandy Black	01268 734357
<b>St Mary's Church</b>	Church Warden	- Beryl Clements	01245 601298
<b>Horticultural</b>	3rd Monday in the month except July, August and December	- Rusi Hodivala	710619
<b>Ladies Medau</b>	Thursday 8pm	- Veronica Greenwood	01702 559914
<b>Cubs</b>	Wed 5.45pm - 7.15pm	- Sue Walter	sue.walter1@icloud.com
<b>Scouts</b>	Wed 7.30pm - 9.30pm	- Chris Maker	01277 652337
	except 2nd Wed in month		
<b>Baptist Church</b>	Val Rook		01277 632006
<b>Bowls</b>	Mon 7.30pm, Tues 7.30pm,		
	Wed 10am, Fri 1.30pm	- Hilary Simpson	01268 711118
<b>Dancing Club</b>	Every Sunday 7.45pm - 10.30pm		
	General Dancing	- Barry Gardiner	07702 233898
<b>Whist Drive</b>	Roy Richards (see Village Events)		710669
<b>Line Dancing</b>	Every Monday 2.30pm - 3.30pm	Ken Dobson	710771
<b>Bellhouse Preschool</b>	Mon to Fri 9.30am - 2.00pm		07881 448686
<b>Website</b>	www.ramsdenbellhouse.info		
<b>Ramsden Parish Council</b>	Georgina Bassett		07469 702826

# Summerhill

## GARDEN CENTRE

*Sowing the seeds for successful gardening*

An amazing selection of plants from all over the world, some grown in our own nursery plus a huge choice of pots, fountains, garden ornaments and an established range of furniture covering all tastes and price requirements.

Telephone: 01268 280699

Pipps Hill Road North, A127 Arterial Road (Eastbound), Essex CM11 2UJ

www.summerhillgardencentre.co.uk




All types of domestic plumbing work.  
Fixed priced quotations at competitive prices.

Debbie Sales

**Sailsey Ltd**      **Your Local Plumberess**

Telephone 01268 733732      Mobile 07833 259195

City and Guilds Qualified · BPEC Certified for Unvented Hot Water Storage Systems and Water Regulations

Website: www.sailsey.co.uk      Email: sailsey@gmail.com

